

ORDER POWER!

Stored Procedures

User Guide Release 4.1



**Computer
Solutions,
Inc.**

6187 N.W. 167th Street, Suite H33
Miami, FL 33015
(305) 558-7000
helpdesk@csiflorida.com

Copyright



ORDER POWER! ©

Version 4.1

Computer Solutions, Inc. 1991-2004

ORDER POWER! Stored Procedures

All Rights Reserved.

Printed in the U.S.A. January 17, 2005

Computer Solutions, Inc.

6187 NW 167 Street

Unit H33

Miami Lakes, Florida 33015 U.S.A.

Telephone: (305) 558-7000

Fax: (305) 557-0003

AS/400™ is a registered trademark of the IBM Corporation.

ORDER POWER!™ is a registered trademark of Computer Solutions, Inc.

Table of Contents

ORDER POWER!! STORED PROCEDURES	1
Configuration of ODBC driver for OP! Stored Procedures	1
<i>ORDER POWER!</i> Stored Procedures.....	5



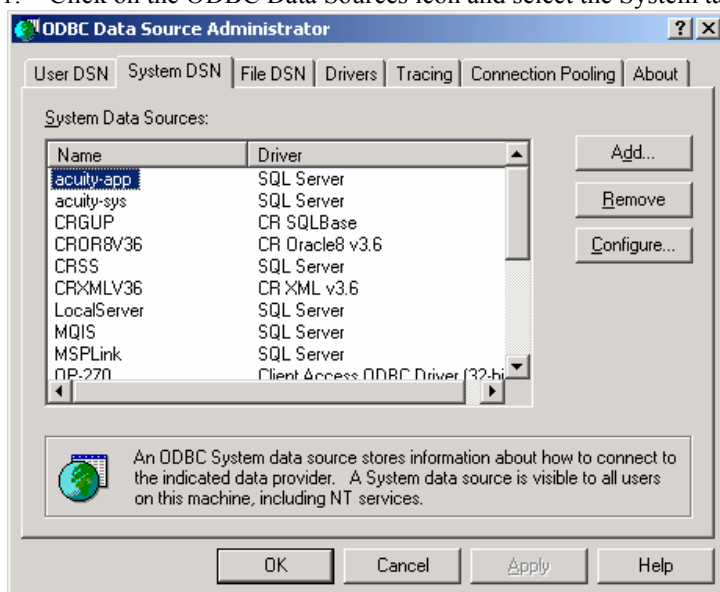
ORDER POWER!!

Stored Procedures

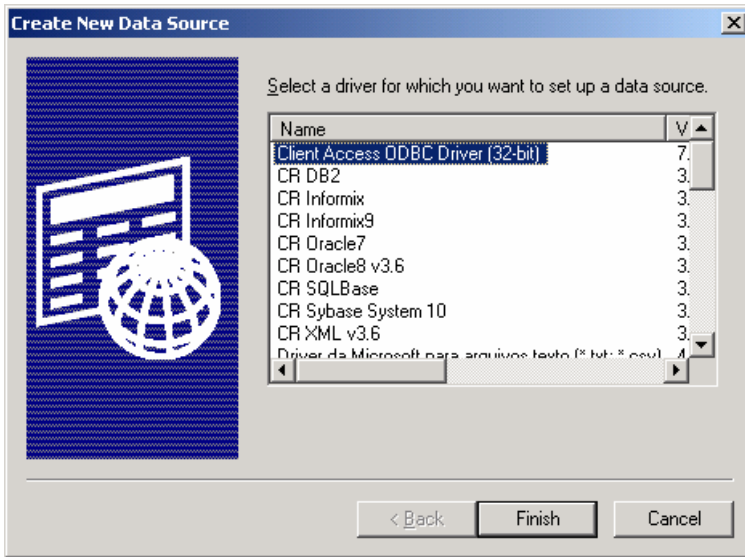
The **ORDER POWER!** Web Store uses RPG programs and SQL to retrieve information for its web pages. In many cases they are the same programs used by Order Entry. Those programs are now available to be called from other computer platforms through special programming called “SQL stored procedures.”

Configuration of ODBC driver for OP! Stored Procedures

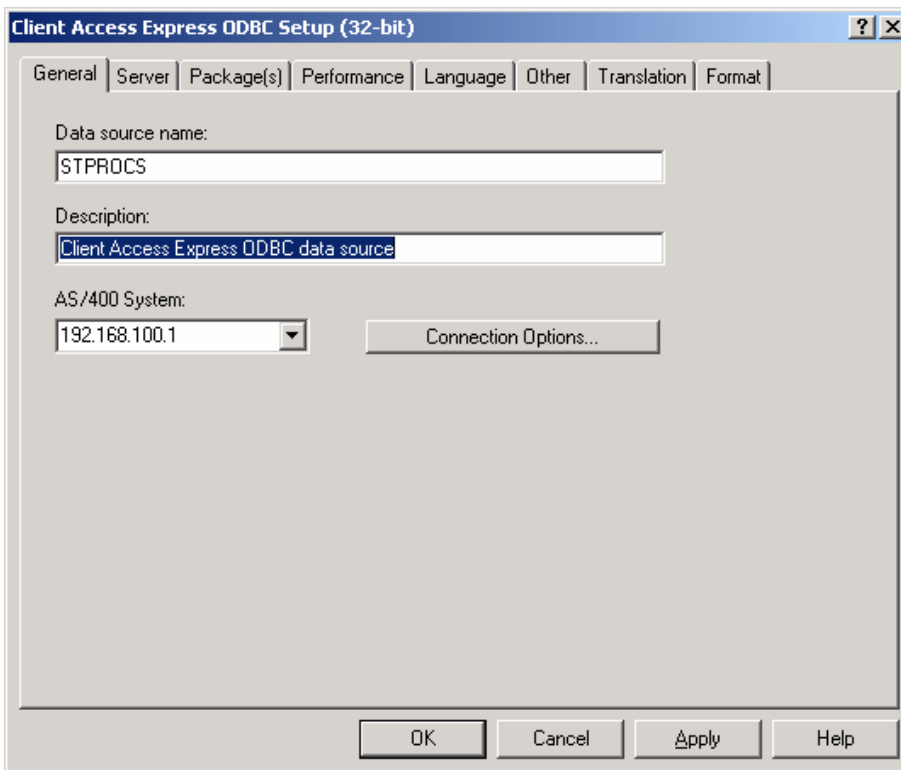
1. Click on the ODBC Data Sources icon and select the System tab as illustrated below:



2. Click on the Add button to create a new ODBC data source:

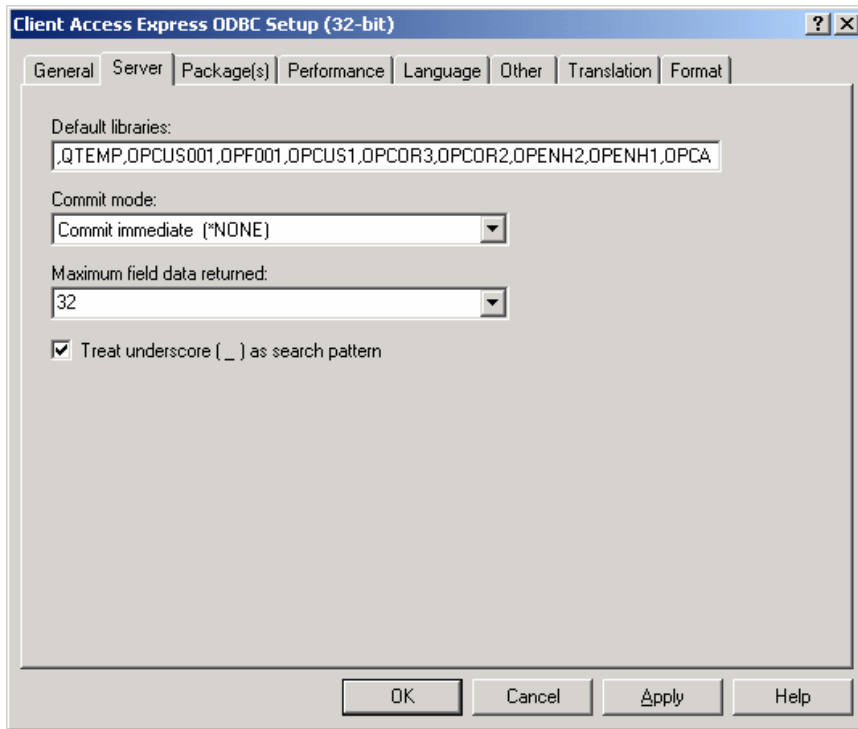


3. Select the Client Access ODBC driver and click on the Finish button.
- 4.
5. Key in a Data Source name of your choosing as indicated below. Leave the Description intact and specify the name of your AS/400 connection under the corresponding select box:

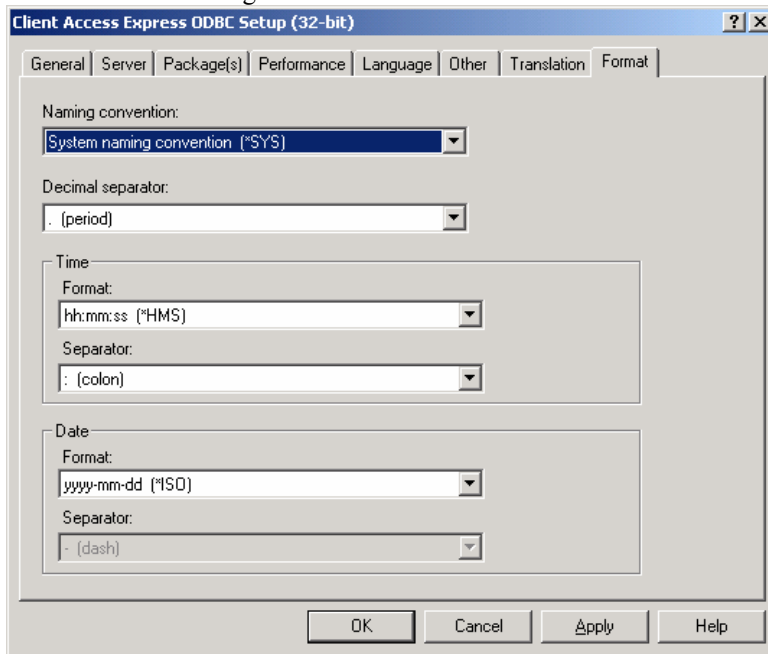


6. Click on the Server tab and set up the Default libraries as follows:
** Notice that not all libraries are visible in this picture. The complete list is as follows:
,QTEMP,OPCUS001,OPF001,OPCUS1,OPCOR3,OPCOR2,OPENH2,OPENH1,OPCAPF,OPACPF,OPG
NLF,OPBASO,OPCAPO

The beginning “,” is required. It is not a typo! The example here is set up for OP! Company 001 as you can see by the use of OPCUS001 & OPF001.



7. Click on the Format tab and be sure to select 'System Naming Convention' (*SYS) for the Naming Convention setting as illustrated below:



Click on Apply and Ok and the definition is done. Now you can proceed to reference it within your web scripts.

ORDER POWER! Stored Procedures

Name	Description	Parameters
CHK_CONTAV	Check Next Continuity Item	CHK_(IN pItem CHAR (15)) OUT nNitem CHAR (15) OUT nRatio DEC (9, 3) OUT cAvail CHAR (1)
CHK_CPNINF	Check Coupons Info	IN company CHAR (3) IN webSiteNum DEC (1, 0) OUT actCoupons CHAR (600) OUT rmvCoupons CHAR (600)
CHK_GFTCRT	Check Gift Certificate Info	IN giftTnd CHAR (3) IN giftN CHAR (10) INOUT subTotalGC DEC (11, 2) INOUT availGC DEC (11, 2) OUT tterm CHAR (3) OUT retCode CHAR (1) OUT errMsg CHAR (78)
CHK_SHIPTO	Check Ship-To	IN company DEC (1, 0) IN webSiteNum DEC (1, 0) IN WFSNAM CHAR (30) IN WFSCPN CHAR (30) IN WFSPOS CHAR (30) IN WFSAD1 CHAR (30) IN WFSAD2 CHAR (30) IN WFSCTY CHAR (20) IN WFSSTE CHAR (2) IN WFSCNT CHAR (2) IN WFSZIP CHAR (10) IN WFSPH1 DEC (11, 0) IN WFSPH2 DEC (11, 0) OUT WNEWML CHAR (1)

Name	Description	Parameters
EXTDSCGRSG	Extended description for Product Groups and Sub	IN webSiteNum DEC (1, 0) IN code CHAR (10) IN mode CHAR (1) IN rtc CHAR (1) OUT length DEC (5, 0) OUT eDsc CHAR (32760)
EXTDSCITEM	Retrieve Extended description for Items	IN webSiteNum DEC (1, 0) IN item CHAR (15) IN rtc CHAR (1) OUT length DEC (5, 0) OUT eDsc CHAR (32760)
FILLSHPCRT	Populate the shopping cart file	IN Handle CHAR (8) IN Order DEC (9,0) IN ShpCust DEC (9,0) IN BillCust DEC (9,0) IN ShpSeq DEC (5,0) IN CusClass CHAR (3) IN Tender CHAR (3) IN OrdMed CHAR (10) IN HdrShpVia CHAR (3) IN Item CHAR (15) IN Line DEC (3,0) IN OrdQty DEC (15,3) IN Price DEC (11,4) IN Whse CHAR (3) IN PersCode CHAR (10) IN PersTyp CHAR (10) IN PersPrc DEC (11,2) IN PersSetUp DEC (11,2) IN PrcShpHnd DEC (11,2) IN PrcMeth CHAR (2) IN MiscChg DEC (11,2) IN DtrShpVia CHAR (3) IN Dis1 CHAR (1) IN Dis2 CHAR (1) IN DetCpnAmt DEC(11,2)

Name	Description	Parameters
		IN Coupon CHAR (15) INOUT RetCod CHAR(1)
GET_AVAIL	Retrieve Available quantity for an Item	IN ITEM CHAR (15) IN WHSE CHAR (3) INOUT QTYAVL DECIMAL (15, 3) IN HANDLE CHAR (8) IN LINE DECIMAL (3, 0) IN PREFW CHAR (1) INOUT AVLW0Q CHAR (1)
GET_AVPRDT	Retrieve Available to promise date	INOUT item CHAR(15) INOut whse CHAR (3) IN ordQty DEC(15,3) INOUT qyav DEC(15,3) INOUT webN DEC (1, 0) IN safetyDays DEC (3,0) OUT pDate CHAR(8) INOUT post CHAR (1)
GET_DEMINF	Retrieve Demographic Information	IN company DEC (3,0) IN webSiteNum DEC (1, 0) IN dsmAns CHAR (20) OUT demcodes CHAR (32760) OUT dspDemCodes CHAR (1)
GET_GFTINF	Retrieve Gift Certificate Information	IN item CHAR (15) OUT retCode CHAR (1) OUT fixD CHAR (1) OUT prefS CHAR (3) OUT shpDsc CHAR (30)
GET_MAILST	Retrieve Mail List Information	IN wincomingCust DEC (9, 0) IN wincomingContact DEC (5, 0) IN wcustType CHAR (1) OUT wfullName CHAR (30) OUT cfullName CHAR (30) OUT wtitle CHAR (30) OUT wcompNam CHAR (30) OUT waddr1 CHAR (30) OUT waddr2 CHAR (30)

Name	Description	Parameters
		OUT wcity CHAR (20) OUT wstate CHAR (2) OUT wzip CHAR (10) OUT wCountry CHAR (2) OUT whomePhone DEC (15, 0) OUT wworkPhone DEC (15, 0) OUT whomePhoneExt CHAR (4) OUT wworkPhoneExt CHAR (4) OUT wemail CHAR (60) OUT wfax DEC (15, 0) OUT wPorq CHAR (1) OUT wmterm CHAR (3) INOUT cusClass CHAR (3) OUT demAns CHAR (20) INOUT innerOrOuter CHAR (1) OUT wShpFound CHAR (1) OUT userInfo1 CHAR (10) OUT userInfo2 CHAR (10) OUT userInfo3 CHAR (10) OUT billToCust DEC (9, 0) OUT creditLim DEC (9, 0) OUT retCode CHAR (1)
GET_ORDINF	Retrieve User Info Order fields	IN SERVER_ADDR CHAR (15) IN infoType CHAR (1) IN item CHAR (15) OUT ordInfo1 CHAR (10) OUT ordInfo2 CHAR (10) OUT ordInfo3 CHAR (10) OUT ordMan1 CHAR (1) OUT ordMan2 CHAR (1) OUT ordMan3 CHAR (1)
GET_PRICE	Retrieve Pricing for an Item	INOUT pltem CHAR (15) INOUT pPrice DEC (11, 2) IN pQty DEC (15, 3) INOUT pSham DEC (11, 2) INOUT pMiam DEC (11, 2)

Name	Description	Parameters
		INOUT pHitf CHAR (2) IN pWbn DEC (1, 0) IN autoQtyBreaks CHAR (1) OUT noOfBreaks DEC (4, 0) OUT qtyBreaks CHAR (32760) IN incomingCust DEC (9, 0) IN cusClass CHAR (3) IN innerOrOuter CHAR (1) IN innerQty DEC (9, 3) IN outerQty DEC (9, 3) OUT dis1 CHAR (1) OUT dis2 CHAR (1) IN mediaOut CHAR (10)
GET_SHIPVD	Retrieve Ship Via Description	IN handle CHAR (8) IN prefShipVia CHAR (1) OUT prefS CHAR (1) IN shipV CHAR (3) IN Country CHAR (2) OUT countryD CHAR (30) OUT shipD CHAR (30) OUT RetCod CHAR (1)
GET_SHPTAX	Calculate S&H and Tax	IN handle CHAR (8) OUT shpAmt DEC (11, 2) OUT taxAm1 DEC (11, 2) OUT taxAm2 DEC (11,2) OUT misAmt DEC (11, 2) OUT ds1Amt DEC (17, 2) IN sTax CHAR (1) IN coupon CHAR (15) OUT dealltem CHAR (15) OUT Desc CHAR (40) OUT persOverWhse CHAR (3) OUT dealQty DEC (15, 3) OUT dealPrice DEC (11, 4) OUT dis1 CHAR (1) OUT dis2 CHAR (1)

Name	Description	Parameters
		OUT dealSham DEC (11, 2) OUT cpnDsc CHAR (1) OUT RetCod CHAR (1) OUT RetInf CHAR (10)
RMV_COUPON	Remove Coupons	IN handle CHAR (8) IN coupon CHAR (15) OUT totalCoup DEC (17, 2) OUT dealItem CHAR (15) OUT Desc CHAR (40) OUT persOverWhse CHAR (3) OUT dealQty DEC (15, 3) OUT dealPrice DEC (11, 4) OUT dis1 CHAR (1) OUT dis2 CHAR (1) OUT dealSham DEC (11, 2) OUT cpnDsc CHAR (1) OUT RetCod CHAR (1) OUT RetInf CHAR (10)
SETORDDTLF	Setup Order Ship Detail Info	INOUT webSiteNum DEC (1, 0) INOUT pOrd DEC (9, 0) INOUT aOrd DEC (9, 0) INOUT workCust DEC (9, 0)
SETORDSHPF	Setup Order Ship manifest Info	INOUT pOrd DEC (9,0) INOUT pCompany CHAR (3) IN webSiteNum DEC (1, 0) INOUT incomingCust DEC (9, 0)
VAL_ITEM	Validate Item Number	tba
VAL_TNDR	Validate Tender information	IN pTend CHAR (3) INOUT pTndNum CHAR (20) IN pTnmm DEC (2, 0) IN pTNyy DEC (2, 0) OUT pRtcnd CHAR (1)

Name	Description	Parameters
VALORDINFO	Validate Order Info	INOUT pOrd DEC (9, 0) INOUT pEmail CHAR (60) OUT retCod CHAR (1) IN webSiteNum DEC (1,0) OUT workCust DEC (9, 0)

